



YZ501	
MAKE:	SANDVIK
MODEL:	LH410
YEAR:	2012
SERIAL NUMBER:	L210D709
UNIT HOURS:	9677
FIRE SUPPRESSION:	YES - ANSUL
ENGINE MAKE:	MERCEDES BENZ
ENGINE MODEL	OM926LA 220KW TIER 3
TRANSMISSION MAKE:	DANA
TRANSMISSION MODEL:	R33425-3, TORO-7
CONVERTER MAKE:	DANA
CONVERTER MODEL:	C5502-245
BRAKES MAKE:	
BRAKES TYPE:	
AXLES MAKE:	KESSLER
AXLES MODEL:	D102PL340/527-NLB-FS, FRONT/REAR POSI-STOP LIMITED SLIP
TIRE SIZE:	18.00-25
ROPS:	YES
FOPS:	YES
CAB:	YES
ENCLOSED:	YES
GLASS:	YES
A/C:	YES
HEAT:	YES
BUCKET TYPE:	
BUCKET CONDITION:	



YZC EQUIPMENT INSPECTION REPORT

UNIT YZ-501..... DESCRIPTION LH-410 SCOOP..... HOURS 9,677....DATE 17/05/16.....

RUNNING CONDITIONS	
ENGINE R.P.M. LOW IDLE 700	HIGH IDLE 2100
TURBO BOOST PRESSURE 2.4 BAR	
ENGINE OIL PRESSURE 5.1 BAR	
TRANSMISSION PRESSURE 19 BAR	
CHARGING VOLTAGE 27.8 VOLTS	
BRAKE CHARGE PRESSURE 174 BAR	PASSES BRAKE TEST
ENGINE RUNS GOOD(NEEDS A NEW STARTER) TRANSMISSION SHIFTS GOOD RUNS GOOD	
GENERAL INFORMATION	
LEFT FRONT TIRE 90% LIFE REMAINING,RIGHT FRONT TIRE 25% LIFE REMAINING,RIMS AND STUDS GOOD	
BOTH REAR TIRES 80% LIFE REMAINING RIMS AND STUDS GOOD	
FRONT AXLE MOUNT BOLTS TIGHT,DRIVELINES,SLIP JOINTS,"U" JOINTS AND SUPPORT BEARING GOOD	
FRONT BRAKES AND LEFT REAR BRAKE AT 1.5 MM,REAR RIGHT BRAKE AT 5MM REMAINING	
BRAKE LINES AND FLUSHING LINES GOOD	
ENGINE MOUNTS,RADIATOR /AIR TO AIR MOUNTS GOOD,NO LEAKS AND HOSES ALL GOOD	
HYDRAULIC AND TRANSMISSION COOLERS GOOD,NO LEAKS, COOLER FAN MOTORS GOOD NO LEAKS	
LEFT STEERING CYLINDER GOOD (RIGHT LEAKS) PINS/BUSHINGS GOOD STEERING STOPS BOTH GOOD	
HYDRAULIC CONTROL VALVE GOOD NO LEAKS,LIFT, TILT CYLINDERS GOOD NO LEAKS PINS/BUSHINGS GOOD	
LOADER BOOM PINS/BUSHINGS GOOD,BUCKET PINS/BUSHINGS 1/4 INCH PLAY	
Z-LINK MAIN PIN/BUSHING GOOD, Z-LINK TO DOG BONE "1" INCH PLAY NOT GOOD	
NO CRACKS IN BOOM AND MACHINE FRAMES	
OSCILLATION AND ARTICULATION JOINTS GOOD	
BATTERIES ARE GOOD,ALL GAUGES AND SWITCHES WORK, E-STOPS ALL WORK,BACK-UP ALARM,HORN	
HEATER AND A/C WORK,FILTERS NEED CHANGING,WIPERS WORK	
AIR RIDE SUSPENSION SEAT GOOD,SEAT CUSHIONS GOOD, SEAT BELT GOOD	
FRONT AND REAR WINDOWS GOOD, TRANS. SIDE WINDOW CRACKED	
ENGINE AIR FILTER HOUSING GOOD ,FILTERS ARE OK	
MACHINE AUTO GREASER WORKS	

BUCKET IS IN GOOD CONDITION MINOR CRACKS ON BUCKET LIP

COMPLETE.....

.....SIGNATURE:.....



YZC EQUIPMENT INSPECTION REPORT

UNIT YZ-501..... DESCRIPTION LH-410 SCOOP..... HOURS 9,677....DATE 17/05/16.....

FAILED INSPECTION INFORMATION
THERE ARE NO ACTIVE CODES
ENGINE STARTER KICKS OUT BEFORE ENGINE STARTS,NEEDS NEW STARTER
SAFETY---PARK BRAKE WILL RELEASE WITH DOOR OPEN,DOOR HINGES WORN, MUST BE CHANGED!!!!
CABIN DOOR DOESN'T CLOSE EASY DUE TO CRACK IN DOOR POST AREA,POOR WELDING JOB
RIGHT STEERING CYLINDER LEAKS AT ROD GUIDE PACKING
TRNSMISSION CONTROL VALVE LEAKS, FITTINGS AND PIPES AREA
TRANSMISSION PRESSURE LINE FROM PUMP TO CONVERTOR LEAKS AT CRIMP,NEEDS NEW HOSE
GREASE BLOCK ON UNDERSIDE OF LEFT BOOM ARM BROKEN MOUNT BOLT, ONE BROKEN GREASE LINE
MIDSHIP DRIVELINE SPEED SENSOR RING MISSING,BOTH SPEED SENSORS DAMAGED, NEED REPLACING
BOOM DOWN FRAME STOP PADS MISSING
DOOR ASSIST CYLINDER NEEDS CHANGING, GAS CHARGE GONE
HEATER BOX ASSIST CYLINDERS, ONE MISSING,GAS CHARGE GONE ON OTHER, NEED CHANGING
BRAKE PUMP NOT WORKING
FRONT MARKER LIGHTS BOTH BROKEN,REAR MARKERS NOT WORKING
FRONT LOW BEAM DRIVING LIGHTS MISSING, HIGH BEAMS WORKING
STROBE LIGHT MISSING
ONE OF FOUR REAR LIGHTS WORK,TWO BROKEN AND ONE NOT WORKING
ENGINE ACCESS COVER DOORS STIFF HINGES,AND NEED ADJUSTMENT TO CLOSE PROPER
HYDRAULIC TANK COVER BENT
RIGHT REAR WHEEL FENDER BENT
CABIN STEP BENT
CABIN RUBBER SKIRTING MISSING

COMPLETE.....

.....SIGNATURE:.....



YZ502	
MAKE:	SANDVIK
MODEL:	LH410
YEAR:	2012
SERIAL NUMBER:	L210D755
UNIT HOURS:	9072
FIRE SUPPRESSION:	YES - ANSUL
ENGINE MAKE:	MERCEDES
ENGINE MODEL	OM926LA 220KW TIER 3
TRANSMISSION MAKE:	DANA
TRANSMISSION MODEL:	R33425-3, TORO-7
CONVERTER MAKE:	DANA
CONVERTER MODEL:	C5502-245
BRAKES MAKE:	
BRAKES TYPE:	
AXLES MAKE:	KESSLER
AXLES MODEL:	D102PL340/527-NLB-FS, FRONT/REAR POSI-STOP LIMITED SLIP
TIRE SIZE:	18.00-25
ROPS:	YES
FOPS:	YES
CAB:	YES
ENCLOSED:	YES
GLASS:	YES
A/C:	YES
HEAT:	YES
BUCKET TYPE:	
BUCKET CONDITION:	GOOD



YZC EQUIPMENT INSPECTION REPORT

UNIT YZ-502..... DESCRIPTION LH-410 SCOOP HOURS 9072....DATE ...18/06/16....

RUNNING INFORMATION	
ENGINE R.P.M. LOW IDLE	700 HIGH IDLE 2100
TURBO BOOST PRESSURE	2.5 BAR
ENGINE OIL PRESSURE LOW IDLE	3.5 BAR HIGH IDLE 5.1 BAR
TRANSMISSION PRESSURE	24 BAR
CHARGING VOLTAGE	27.7 VOLTS
BRAKE CHARGE PRESSURE	165 BAR PASSES BRAKE TEST
HAS TWO FORWARD AND TWO REVERSE GEARS	
ENGINE STARTS GOOD AND TRANSMISSION SHIFTS GOOD AND RUNS GOOD	
GENERAL INFORMATION	
RIGHT FRONT TIRE 75% LIFE REMAINING, LEFT FRONT TIRE 25% LIFE REMAINING, BOTH RIMS/STUDS GOOD	
BOTH REAR TIRES 25% LIFE REMAINING RIMS AND STUDS ARE GOOD	
FRONT AXLE MOUNT BOLTS TIGHT,DRIVELINES,SLIP JOINTS, "U" JOINTS ALL GOOD	
ALL FOUR BRAKES 1 MM TO 1.5 MM REMAINING, BRAKE LINES AND FLUSHING LINES GOOD	
ENGINE MOUNTS, RADIATOR/ AIR TO AIR MOUNTS GOOD NO LEAKS AND HOSING IS GOOD	
HYDRAULIC AND TRANSMISSION COOLERS GOOD NO LEAKS, FAN BLADES GOOD,RIGHT FAN MOTOR NO	
STEERING CYLINDERS GOOD, NO LEAKS PINS/BUSHINGS POOR, STEERING STOPS GOOD	
HYDRAULIC CONTROL VALVE GOOD NO LEAKS, LIFT, TILT CYLINDERS GOOD NO LEAKS, PIN/BUSHINGS GOOD	
LOADER BOOM PINS /BUSHINGS GOOD, BUCKET PINS/BUSHINGS GOOD,S-LINK GOOD , PINS/BUSHINGS	
DOG BONE GOOD, PINS/BUSHINGS GOOD, NO CRACKS IN BOOM OR MACHINE FRAMES	
ARTICULATION IS GOOD AND OSCILLATING AXLE GOOD	
ALL WINDOWS GOOD, NO CRACKS, WIPERS ALL WORK	
ALL DASH SWITCHES WORK, OPERATOR PEDALS GOOD	
HEATER AND A/C WORK, NEEDS NEW CAB FILTERS, ALL LIGHTS WORK FRONT AND REAR AND STROBE	
BATTERIES ARE GOOD, AUTO GREASER WORKS	
SEAT AIR SUSPENSION GOOD, SEAT CUSHIONS FAIR AND SEAT BELT GOOD	
BUCKET LUGS 70% REMAINING UNDERSIDE WEAR BARS 50% REMAINING, SOME WELDS BROKEN ON BARS	

COMPLETE.....

.....SIGNATURE:.....



YZC EQUIPMENT INSPECTION REPORT

UNIT YZ-502..... DESCRIPTION LH-410 SCOOP HOURS 9072....DATE ...18/06/16....

FAILED INSPECTION INFORMATION
ACTIVE CODE---TRANSMISSION PRESSURE TO HIGH YELLOW AND RED LIGHT ON
ACTIVE CODE----- BRAKE LEVEL WARNING YELLOW LIGHT ON
FRONT RIGHT WHELL SEAL LEAKING
LEFT OIL COOLER FAN MOTOR SHAFT SEAL LEAKING
STEERING CYLINDER PIINS/BUSHINGS WORN 3/8 INCH
DRIVELINE SUPPORT BEARING HAS PLAY IN BEARINGS, NEEDS CHANGING
DRIVELINE TWO SPEED SENSORS BROKEN AND SPEED RING MISSING OFF DRIVELINE
TRANSMISSION DIPSTICK BROKEN OFF
BRAKE PUMP NOT WORKING
NEED NEW AIR FILTERS AND CAB FILTERS
AIR TO AIR COOLER HAS SOME BENT(PUSHED IN) TUBES, NO LEAKS
RADIATOR HAS ONE SLIGHTLY PUSHED IN TUBE, NO LEAKS
STEERING LOCK PIN MISSING
DOOR HINGES WORN, CAUSING DOOR SAFTEY SWITCH TO MALFUNCTION
BUCKET TEETH WORN OUT, NEED CHANGING(SHARK TEETH)
SOME WELDS BROKEN ON BUCKET UNDERSIDE WEAR BARS, NEED REPAIRED BEFORE THEY FALL OFF
CAB DOOR ASSIST CYLINDER NEEDS CHANGING
CAB INTERIOR LIGHTS NOT WORKING
REVERSE CAMERA NOT WORKING
NO CAB RUBBER SKIRTING
LEFT COOLER ACCESS DOOR HINGE BROKEN
HYDRAULIC TANK TOP ACCESS COVER BENT

COMPLETE.....

.....SIGNATURE:.....



YZ503	
MAKE:	SANDVIK
MODEL:	LH410
YEAR:	
SERIAL NUMBER:	L210D742
UNIT HOURS:	10,034 HRS
FIRE SUPPRESSION:	YES - ANSUL
ENGINE MAKE:	MERCEDES
ENGINE MODEL	OM926LA 220KW TIER 3
TRANSMISSION MAKE:	DANA
TRANSMISSION MODEL:	R33425-3, TORO-7
CONVERTER MAKE:	DANA
CONVERTER MODEL:	C5502-245
BRAKES MAKE:	
BRAKES TYPE:	
AXLES MAKE:	KESSLER
AXLES MODEL:	D102PL340/527-NLB-FS, FRONT/REAR POSI-STOP LIMITED SLIP
TIRE SIZE:	18.00-25
ROPS:	YES
FOPS:	YES
CAB:	YES
ENCLOSED:	YES
GLASS:	YES
A/C:	YES
HEAT:	YES
BUCKET TYPE:	
BUCKET CONDITION:	GOOD



YZC EQUIPMENT INSPECTION REPORT

UNIT YZ-504..... DESCRIPTION LH-410 SCOOP..... HOURS 8998DATE 21/06/16....

RUNNING CONDITION	
ENGINE R.P.M. LOW IDLE	700 HIGH IDLE 2080
TURBO BOOST PRESSURE 2.3 BAR	
ENGINE OIL PRESSURE LOW IDLE	2.3 BAR HIGH IDLE 4.5 BAR
TRANSMISSION PRESSURE 18 BAR	
CHARGING VOLTAGE 27.5 VOLTS	
BRAKE CHARGE PRESSURE	158 BAR PASSES BRAKE TEST
HAS TWO FORWARD AND TWO REVERSE GEARS	
ENGINE STARTS GOOD, TRANSMISSION VERY NOISY AND MAKES METAL	
GENERAL INFORMATION	
BOTH FRONT TIRES 10-20% LIFE REMAINING RIMS AND STUDS GOOD	
BOTH REAR TIRES 25% LIFE REMAINING RIMS AND STUDS GOOD	
FRONT AXLE MOUNT BOLTS TIGHT DRIVELINES, SLIP JOINTS, "U" JOINTS AND SUPPORT BEARING GOOD	
FRONT BRAKES 3 MM REAR BRAKES 2 MM REMAINING BRAKE LINES AND FLUSHING LINES GOOD	
ENGINE MOUNTS, RADIATOR/AIR TO AIR MOUNTS GOOD, NO LEAKS AND HOSING IS GOOD	
HYDRAULIC AND TRANS. COOLERS GOOD NO LEAKS, COOLER FANS AND FAN MOTORS GOOD NO LEAKS	
STEERING CYLINDERS GOOD NO LEAKS PINS/BUSHINGS 3/8 INCH PLAY STEERING STOPS GOOD	
HYDRAULIC CONTROL VALVE GOOD NO LEAKS, LIFT, TILT CYLINDERS GOOD NO LEAKS, PINS/BUSHINGS GOOD	
LOADER BOOM PINS/BUSHINGS GOOD, BUCKET PINS/BUSHINGS POOR, Z LINK GOOD PINS/BUSHINGS GOOD	
DOG BONE GOOD, PINS/BUSHINGS GOOD, NO BOOM OR MACHINE FRAME CRACKS	
ARTICULATION IS GOOD AND OSCILLATING AXLE MOUNTS GOOD	
ALL LIGHTS WORK EXCEPT ONE FRONT LIGHT, ALL WIPERS WORK	
HEATER AND A/C WORK NEEDS NEW CAB FILTERS, BATTERIES ARE GOOD	
ALL DASH SWITCHES WORK AND OPERATOR PEDALS GOOD	
SEAT AIR SUSPENSION GOOD, SEAT NEW, SEAT BELT GOOD	
ALL WINDOW PANES GOOD NO CRACKS	
ENGINE AIR FILTER HOUSING NEW , FILTERS NEW	
AUTO GREASER WORKS, ALL MACHINE ACCESS DOORS AND COVERS GOOD	

BUCKET IS GOOD, PUSH PLATE WORKS, BUCKET LUGS 75% REMAINING, UNDERSIDE WEAR BARS 75%

BUCKET STOPS GOOD

COMPLETE.....

.....SIGNATURE:.....



YZC EQUIPMENT INSPECTION REPORT

UNIT YZ-503..... DESCRIPTION LH-410 SCOOP..... HOURS 10,034DATE 15/06/16.....

RUNNING INFORMATION	
ENGINE R.P.M. LOW IDLE 710	HIGH IDLE 2010 R.P.M.
TURBO BOOST PRESSURE 2.3 BAR	
ENGINE OIL PRESSURE LOW IDLE 3.1 BAR HIGH IDLE 4.8 BAR	
TRANSMISSION PRESSURE 18 BAR	
CHARGE VOLTAGE 27.6 VOLTS	
BRAKE CHARGE PRESSURE 178 BAR	PASSES BRAKE TEST
HAS TWO FORWARD GEARS AND TWO REVERSE GEARS	
ENGINE STARTS GOOD AND RUNS GOOD, TRANSMISSION SHIFTS AND RUNS GOOD	
GENERAL INFORMATION	
BOTH FRONT TIRES 50% LIFE REMAINING RIM AND STUDS GOOD	
RIGHT REAR TIRE 20% LIFE REMAINING, LEFT REAR TIRE 75% LIFE REMAINING BOTH RIMS AND STUDS GOOD	
FRONT AXLE MOUNT BOLTS TIGHT ,DRIVE LINES ,SLIP JOINTS,"U" JOINTS GOOD	
FRONT BRAKES 1.5 MM REMAINING, LEFT REAR BRAKE 1.5 REMAING, RIGHT REAR 6 MM REMAINING	
BRAKE LINES AND BRAKE FLUSHING LINES GOOD	
ENGINE MOUNTS,RADIATOR/AIR TO AIR MOUNTS GOOD, NO LEAKS AND HOSING GOOD	
HYDRAULIC AND TRANS. COOLERS GOOD NO LEAKS,COOLER FAN MOTORS GOOD NO LEAKS	
STEERING CYLINDERS GOOD NO LEAKS STEERING STOPS GOOD	
HYDRAULIC CONTROL VALVE GOOD NO EXTERNAL LEAKS, LIFT AND TILT CYL. GOOD NO LEAKS	
LIFT AND TILT CYL. PINS/BUSHINGS GOOD	
LOADER BOOM PINS/BUSHINGS GOOD, Z-LINK AND DOG BONE GOOD, PINS/BUSHINGS GOOD	
ARTICULATION GOOD AND OSCILLATING AXLE MOUNT GOOD	
NO BOOM OR MACHINE FRAME CRACKS	
ENGINE AIR FILTER HOUSING GOOD, FILTERS ARE FAIR	
HEATER AND A/C WORK NEEDS NEW CAB FILTERS	
ALL WINDOWS GOOD NO CRACKS, WIPERS ALL WORK, FRONT AND REAR LIGHTS GOOD	
SEAT AIR SUSPENSION GOOD, SEAT CUSHION FAIR CONDITION	
AUTO GREASER WORKS	

MACHINE ACCESS DOORS AND COVERS ARE GOOD
BUCKET GOOD, LUGGING AND UNDERSIDE WEAR BARS 75% LIFE REMAINING

COMPLETE.....

.....SIGNATURE:.....



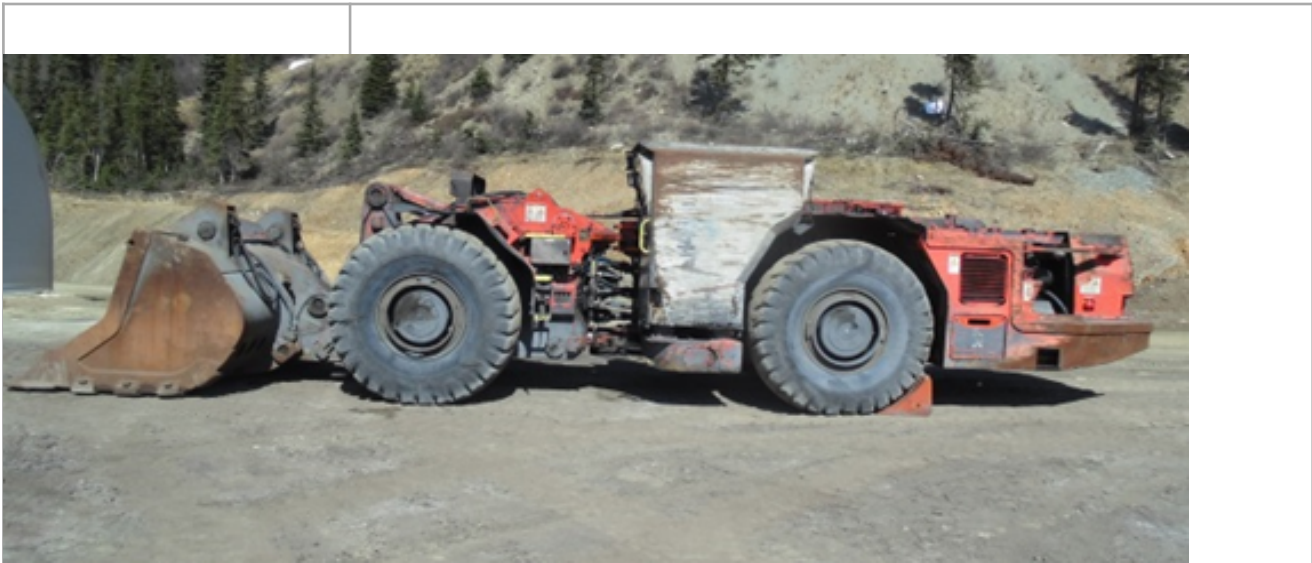
YZC EQUIPMENT INSPECTION REPORT

UNIT YZ-503..... DESCRIPTION LH-410 SCOOP..... HOURS 10,034DATE 15/06/16.....

FAILED INSPECTION INFORMATION
ONE ACTIVE FAULT CODE, WHEN MOVING CODE SPEED SENSOR MISSING COMES UP
DRIVE LINE SUPPORT BEARING, VIBRATION AND LOOSE BEARINGS, NEEDS CHANGING
BOOM DRIFTS EMPTY OR LOADED ONE INCH PER MINUTE
BOOM DOWN FRAME STOPS MISSING
BUCKET TO BOOM PINS/BUSHINGS ONE INCH PLAY
STEERING ROD END PINS/BUSHINGS 1/2 INCH PLAY
BUCKET STOPS EACH HAVE ONE BROKEN MOUNT BOLT
FRONT DIFF. INPUT SEAL LEAKS
TRANSMISSION OIL LEAK ON TORQUE HOUSING COMES OUT FLYWHEEL HOUSING
TRANSMISSION LEVEL TUBE VENT MISSING
BRAKE RELEASE PUMP NOT WORKING
DOOR HINGES NEED REPLACING AS DOOR SAFETY SWITCH NOT WORKING PROPERLY
THROTTLE PEDAL NEEDS REPLACING, SENSOR VOLTAGE LOW
DOOR ASSIST CYLINDER NEEDS REPLACING,WEAK
ONE HEATER BOX ASSIST CYLINDER MISSING, OTHER ONE IS GOOD
CAB RUBBER SKIRTING MISSING
SEAT BELT NEEDS REPLACING
AUTO GREASER COVER HAS ONE BROKEN MOUNT TAB
LEFTREAR EMERGENCY STOP HAS BROKEN PUSH BUTTON
STROBE LIGHT MISSING
FRONT RIGHT MARKER LIGHT BROKEN
ONE TOP CAB LIGHT NOT WORKING
LOWER CAB LIGHT NOT WORKING
REAR LEFT BACK-UP LIGHT MISSING
REVERSE CAMERA NOT WORKING

COMPLETE.....

.....SIGNATURE:.....



MAKE:	SANDVIK
MODEL:	LH410
YEAR:	2013
SERIAL NUMBER:	L310D798
UNIT HOURS:	7,829
FIRE SUPPRESSION:	YES - ANSUL
ENGINE MAKE:	MERCEDES BENZ
ENGINE MODEL:	OM926LA 220KW TIER 3
TRANSMISSION MAKE:	DANA
TRANSMISSION MODEL:	R33425-3, TORO-7
CONVERTER MAKE:	DANA
CONVERTER MODEL:	C5502-245
BRAKES MAKE:	
BRAKES TYPE:	
AXLES MAKE:	KESSLER
AXLES MODEL:	D102PL340/527-NLB-FS, FRONT/REAR POSI-STOP LIMITED SLIP
TIRE SIZE:	18.00-25
ROPS:	YES - S/N 620477
FOPS:	YES
CAB:	YES
ENCLOSED:	YES
GLASS:	YES
A/C:	YES
HEAT:	YES
BUCKET TYPE:	EJECTOR 4.6 m3
BUCKET CONDITION:	FAIR



YZC EQUIPMENT INSPECTION REPORT

UNIT YZ-505..... DESCRIPTION LH-410 SCOOP..... HOURS 7829..... DATE 13/05/16.....

RUNNING INFORMATION	
ENGINE R.P.M. LOW IDLE 700	HIGH IDLE 2160
TURBO BOOST 2.7 BAR	
ENGINE OIL PRESSURE LOW IDLE 2.2 BAR HIGH IDLE 4.4 BAR	
TRANSMISSION PRESSURE 18.3 BAR	
CHARGING VOLTAGE 27.4 VOLTS	
BRAKE CHARGE PRESSURE 154 BAR	PASSES BRAKE TEST
HAS TWO FORWARD GEARS AND TWO REVERSE GEARS	
ENGINE STARTS GOOD AND RUNS GOOD , TRANSMISSION SHIFTS GOOD AND RUNS GOOD	
GENERAL INFORMATION	
RIGHT FRONT TIRE 50 % LIFE REMAINING RIM AND STUDS GOOD	
LEFT FRONT TIRE 25% LIFE REMAINING, DUE TO TIRE TREAD ROUGH WEAR, RIM AND STUDS GOOD	
BOTH REAR TIRES 40% LIFE REMAINING RIMS AND STUDS GOOD	
FRONT AXLE MOUNT BOLTS TIGHT, DRIVE LINES ,SLIP JOINTS, "U" JOINTS AND SUPPORT BEARING GOOD	
ALL FOUR BRAKES 2MM REMAINING, BRAKE LINES AND FLUSHING LINES GOOD	
ENGINE MOUNTS,RADIATOR/AIR TO AIR MOUNTS GOOD,NO LEAKS AND HOSING IS GOOD	
HYDRAULIC AND TRANS. COOLERS GOOD NO LEAKS,COOLER FANS GOOD NO LEAKS	
STEERING CYLINDERS GOOD,NO LEAKS ,PINS/BUSHINGS GOOD, STEERING STOPS GOOD	
HYDRAULIC CONTROL VALVE GOOD NO LEAKS,LIFT,TILT CYLINDERS GOOD NO LEAKS,PIN/BUSHINGS GOOD	
LOADER BOOM PINS/BUSHINGS GOOD ,BUCKET PINS/BUSHINGS GOOD,Z-LINK GOOD,PINS/BUSHINGS GOOD	
DOG BONE GOOD PINS/BUSHINGS GOOD , NO CRACKS ON ANY FRAMES	
ARTICULATION IS GOOD AND OSCILLATING AXLE GOOD	
FRONT AND REAR MARKER LIGHTS WORK,FRONT AND REAR WORK LIGHTS GOOD ,ONE REAR LIGHT MISSING	
FRONT AND REAR WINDOW PANES GOOD, TRANS. SIDE WINDOW BADLY CRACKED	
ALL SWITCHES AND GAUGES WORK, WIPERS ALL WORK	
HEATER AND A/C WORK NEEDS NEW CAB FILTERS	
SEAT AIR SUSPENSION GOOD	
ENGINE AIR FILTER HOUSING GOOD,HAS NEW FILTERS	

ACCESS DOORS AND COVERS ARE GOOD

COMPLETE.....

.....SIGNATURE:.....



YZC EQUIPMENT INSPECTION REPORT

UNIT YZ-505..... DESCRIPTION LH-410 SCOOP..... HOURS 7829..... DATE 13/05/16.....

FAILED INSPECTION INFORMATION
ONE ACTIVE CODE--- THROTTLE PEDAL VOLTAGE OUT OF HIGHER LIMITS, PEDAL SENSOR NEEDS CHANGING
FORWARD SHIFT COIL MISSING ON TRANSMISSION CONTROL VALVE
HR. METER ON DISPLAY IS ONLY READY 34 HRS ??
BUCKET DUMP FUNCTION JOYSTICK STICKS CAUSING BUCKET TO DRIFT,POOR JOY STICK SWITCH
NEEDS BATTERIES AS THERE WAS NONE WITH THE MACHINE
TORQUE CONVERTER LEAKS INTO ENGINE FLYWHEEL HOUSING
FRONT TRANSMISSION OUTPUT SEAL LEAKS
ONE RADIATOR TUBE BENT ,DOES NOT LEAK
BRAKE RELEASE PUMP DOES NOT WORK
BOOM DOWN FRAME STOP PADS MISSING
BUCKET STOPS FALLING OFF ,STRIPPED BOLT HOLES, BUKET STOP PADS ON BOOM FRAME NEED WELDING
ON LEFT SIDE FRONT FRAME WERE BOOM LOCK HOLDS BOOM UP THE EAR IS BENT
SMALL AMOUNT OF PLAY IN DOOR HINGES,DOOR ASSIST CYLINDER NO GOOD NEEDS CHANGING
HEATER BOX ASSIST CYLINDERS NO GOOD NEED CHANGING, HEATER TO CAB HOSING HAS RIPS IN IT
OPERATOR CAB STEP BENT, CAB RUBBER SKIRTING MISSING
BUCKET LIP WORN OVER 50% AND HAS CRACKS
BUCKET UNDERSIDE WEAR BARS 25% LIFE REMAINING,BUCKET LUGGING 25% LIFE REMAINING
MAJOR WEAR ON BUCKET EARS FOR THE PIN BOSSES
EJECTOR BUCKET NOT WORKING, SUSPECT BAD SWITCH IN JOYSTICK
SIDE WINDOW ON TRANSMISSION SIDE BADLY CRACKED
SEAT CUSHION TORN AND SEAT BELT FRAYED
REAR LEFT WORK LIGHT MISSING
STROBE LIGHT MISSING

COMPLETE.....

.....SIGNATURE:.....